



**REGIONAL SPECIALISED METEOROLOGICAL CENTRE-TROPICAL CYCLONES, NEW DELHI
TROPICAL WEATHER OUTLOOK**

DEMS-RSMC SPECIAL TROPICAL CYCLONES NEW DELHI DATED 22.10.2023

FROM: RSMC –TROPICAL CYCLONES, NEW DELHI

**TO: STORM WARNING CENTRE, NAYPYI TAW (MYANMAR)
STORM WARNING CENTRE, BANGKOK (THAILAND)
STORM WARNING CENTRE, COLOMBO (SRILANKA)
STORM WARNING CENTRE, DHAKA (BANGLADESH)
STORM WARNING CENTRE, KARACHI (PAKISTAN)
METEOROLOGICAL OFFICE, MALE (MALDIVES)
OMAN METEOROLOGICAL DEPARTMENT, MUSCAT (THROUGH RTH JEDDAH)
YEMEN METEOROLOGICAL SERVICES, REPUBLIC OF YEMEN (THROUGH RTH JEDDAH)
NATIONAL CENTRE FOR METEOROLOGY, UAE (THROUGH RTH JEDDAH)
PRESIDENCY OF METEOROLOGY AND ENVIRONMENT, SAUDI ARABIA (THROUGH RTH JEDDAH)
IRAN METEOROLOGICAL ORGANISATION, (THROUGH RTH JEDDAH)
QATAR METEOROLOGICAL DEPARTMENT (THROUGH RTH JEDDAH)**

TROPICAL CYCLONE ADVISORY NO. 09 FOR NORTH INDIAN OCEAN (THE BAY OF BENGAL AND THE ARABIAN SEA) VALID FOR NEXT 120 HOURS ISSUED AT 0330 UTC OF 22.10.2023 BASED ON 0000 UTC OF 22.10.2023.

SUB: (A) VERY SEVERE CYCLONIC STORM “TEJ” (PRONOUNCED AS TEJ) OVER WEST CENTRAL AND ADJOINING SOUTHWEST ARABIAN SEA AND (B) DEPRESSION OVER WESTCENTRAL BAY OF BENGAL

(A) VERY SEVERE CYCLONIC STORM “TEJ” (PRONOUNCED AS TEJ) OVER WEST CENTRAL AND ADJOINING SOUTHWEST ARABIAN SEA

THE VERY SEVERE CYCLONIC STORM “TEJ” (PRONOUNCED AS TEJ) OVER SOUTHWEST ARABIAN SEA MOVED NORTH-WESTWARDS WITH A SPEED OF 16 KMPH DURING PAST 6 HOURS, AND LAY CENTERED AT 0000 UTC OF 22ND OCTOBER OVER WEST CENTRAL AND ADJOINING SOUTHWEST ARABIAN SEA, NEAR LATITUDE 12.0°N AND LONGITUDE 56.0°E ABOUT 240 KM EAST-SOUTHEAST OF SOCOTRA (YEMEN, 41494), 600 KM SOUTH-SOUTHEAST OF SALALAH (OMAN, 41316) AND 620 KM SOUTHEAST OF AL GHAI DAH (YEMEN, 41398).

IT IS VERY LIKELY TO INTENSIFY FURTHER INTO AN EXTREMELY SEVERE CYCLONIC STORM IN THE 0600 UTC OF 22ND OCTOBER. IT IS VERY LIKELY TO MOVE NORTHWESTWARDS TILL 0000UTC OF 24TH & THEN NORTH-NORTHWESTWARDS. IT IS LIKELY TO CROSS YEMEN-OMAN COASTS BETWEEN AL GHAI DAH (YEMEN, 41398) & SALALAH (OMAN, 41316), CLOSE TO EAST OF AL GHAI DAH (YEMEN, 41398) AROUND 0600 UTC OF 24TH OCTOBER.

FORECAST TRACK AND INTENSITY OF THE SYSTEM IS GIVEN BELOW:

DATE/TIME(UTC)	POSITION (LAT. ^o N/LONG. ^o E)	MAXIMUM SUSTAINED SURFACE WIND SPEED (KMPH)	CATEGORY OF CYCLONIC DISTURBANCE
22.10.23/0000	12.0/56.0	150-160 GUSTING TO 175	VERY SEVERE CYCLONIC STORM
22.10.23/0600	12.6/55.5	165-175 GUSTING TO 195	EXTREMELY SEVERE CYCLONIC STORM
22.10.23/1200	13.2/55.0	180-190 GUSTING TO 210	EXTREMELY SEVERE CYCLONIC STORM
22.10.23/1800	13.8/54.5	180-190 GUSTING TO 210	EXTREMELY SEVERE CYCLONIC STORM
23.10.23/0000	14.3/54.0	165-175 GUSTING TO 195	EXTREMELY SEVERE CYCLONIC STORM
23.10.23/1200	15.1/53.1	145-155 GUSTING TO 170	VERY SEVERE CYCLONIC STORM
24.10.23/0000	16.0/52.5	125-135 GUSTING TO 150	VERY SEVERE CYCLONIC STORM
24.10.23/1200	16.8/52.0	90-100 GUSTING TO 110	SEVERE CYCLONIC STORM
25.10.23/0000	17.6/51.6	60-70 GUSTING TO 80	CYCLONIC STORM
25.10.23/1200	18.6/51.1	30-40 GUSTING TO 50	DEPRESSION

AS PER INSAT 3D IMAGERY, INTENSITY OF THE SYSTEM IS CHARACTERISED AS T 4.5 AND RAGGED EYE IS SEEN IN INFRARED IMAGERY. ASSOCIATED SCATTERED TO BROKEN LOW AND MEDIUM CLOUDS WITH EMBEDDED INTENSE TO VERY INTENSE CONVECTION LAY OVER SOUTHWEST & ADJOINING WESTCENTRAL ARABIAN SEA BETWEEN LAT 9.0N TO 16.0N LONG 53.0E TO 60.0E. MINIMUM CLOUD TOP TEMPRATURE IS MINUS 90^oC. MULTISATELLITE WINDS INDICATE STRONGER WINDS IN NORTHEAST & ADJOINING NORTHWEST SECTOR. TOTAL PRECIPITABLE WATER IMAGERY INDICATES WARM MOIST AIR INCURSION INTO THE SYSTEM CORE.

ASSOCIATED MAXIMUM SUSTAINED WIND SPEED IS 85 KNOTS GUSTING TO 95 KNOTS. THE ESTIMATED CENTRAL PRESSURE IS 974 HPA.

SEA CONDITION:

- **SOUTHWEST ARABIAN SEA:**

PHENOMENAL SEA CONDITION IS PREVAILING AND WILL CONTINUE TILL 0000 UTC OF 23RD OCTOBER. IT IS LIKELY TO IMPROVE GRADUALLY BECOMING **VERY HIGH** FROM 0000 UTC OF 24TH AND CONTINUE TILL 0000 UTC OF 25TH. THEREAFTER, IT WOULD IMPROVE GRADUALLY.

- **WESTCENTRAL ARABIAN SEA:**

PHENOMENAL SEA CONDITION IS PREVAILING AND WILL CONTINUE TILL 1200 UTC OF 24TH OCTOBER. IT WOULD IMPROVE GRADUALLY THEREAFTER BECOMING **VERY HIGH TO HIGH** FROM 1800 UTC OF 24TH. THEREAFTER, IT WOULD IMPROVE GRADUALLY.

- **STORM SURGE GUIDANCE:**

STORM SURGE ABOUT 2 METER HEIGHT ABOVE THE ASTRONOMICAL TIDE IS LIKELY TO INUNDATE LOW LYING AREA NEAR THE LANDFALL POINT AT THE TIME OF LANDFALL.

(B) DEPRESSION OVER WESTCENTRAL BAY OF BENGAL

THE DEPRESSION OVER WESTCENTRAL BAY OF BENGAL MOVED WEST-NORTHWESTWARDS WITH A SPEED OF 06 KMPH DURING PAST 6 HOURS, AND LAY CENTERED AT 0000 UTC OF 22ND OCTOBER OVER THE SAME REGION, NEAR LATITUDE 14.9°N AND LONGITUDE 86.1°E ABOUT 600 KM SOUTH OF PARADIP (INDIA, 42976), 760 KM SOUTH OF DIGHA (INDIA, 42901), AND 900 KM SOUTH-SOUTHWEST OF KHEPUPARA (BANGLADESH, 41984).

IT IS LIKELY TO FURTHER INTENSIFY INTO A DEEP DEPRESSION DURING NEXT 24 HOURS. IT IS LIKELY TO MOVE NORTHWESTWARDS DURING NEXT 12 HOURS, THEN RECURVE AND MOVE NORTH-NORTHEASTWARDS DURING SUBSEQUENT 3 DAYS TOWARDS BANGLADESH AND ADJOINING WEST BENGAL COASTS.

AS PER INSAT 3D IMAGERY, INTENSITY OF THE SYSTEM IS CHARACTERISED AS T 1.5. ASSOCIATED SCATTERED TO BROKEN LOW AND MEDIUM CLOUDS WITH EMBEDDED INTENSE TO VERY INTENSE CONVECTION LAY OVER CENTRAL BAY OF BENGAL BETWEEN LAT 14.0N TO 20.0N LONG 84.0E TO 90.0E. MINIMUM CLOUD TOP TEMPRATURE IS MINUS 85⁰C. MULTISATELLITE WINDS INDICATE STRONGER WINDS IN NORTHEAST & ADJOINING NORTHWEST SECTOR. TOTAL PRECIPITABLE WATER IMAGERY INDICATES WARM MOIST AIR INCURSION INTO THE SYSTEM CORE.

ASSOCIATED MAXIMUM SUSTAINED WIND SPEED IS 25 KNOTS GUSTING TO 35 KNOTS. THE ESTIMATED CENTRAL PRESSURE IS 1006 HPA.

FORECAST TRACK AND INTENSITY OF THE SYSTEM IS GIVEN BELOW:

DATE/TIME(UTC)	POSITION (LAT.⁰N/LONG.⁰E)	MAXIMUM SUSTAINED SURFACE WIND SPEED (KMPH)	CATEGORY OF CYCLONIC DISTURBANCE
22.10.23/0000	14.9/86.1	40-50 GUSTING TO 60	DEPRESSION
22.10.23/1200	15.4/85.7	45-55 GUSTING TO 65	DEPRESSION
23.10.23/0000	16.0/85.7	50-60 GUSTING TO 70	DEEP DEPRESSION
23.10.23/1200	17.1/86.3	55-65 GUSTING TO 75	DEEP DEPRESSION
24.10.23/0000	18.4/87.1	60-70 GUSTING TO 80	CYCLONIC STORM
24.10.23/1200	19.5/88.0	60-70 GUSTING TO 80	CYCLONIC STORM
25.10.23/0000	20.6/88.9	60-70 GUSTING TO 80	CYCLONIC STORM

Warnings:

REMARKS:

ARABIAN SEA:

MADDEN JULIAN OSCILLATION INDEX IS IN PHASE 8 WITH AMPLITUDE LESS THAN 1. IT WOULD CONTINUE IN SAME PHASE DURING NEXT 5 DAYS. SEA SURFACE TEMPERATURE IS 28-30°C OVER SOUTH & WESTCENTRAL ARABIAN SEA. THE TROPICAL CYCLONE HEAT POTENTIAL IS AROUND 75 KJ/CM² OVER SOUTHWEST ARABIAN SEA NEAR THE SYSTEM LOCATION. IT WOULD DECREASE GRADUALLY BECOMING 15-35 KJ/CM² OVER WESTCENTRAL ARABIAN SEA & ALONG & OFF OMAN-YEMEN COASTS.

THE LOW LEVEL POSITIVE IS AROUND $150 \times 10^{-6} \text{S}^{-1}$ TO THE SOUTHWEST OF SYSTEM CENTER WITH VERTICAL EXTENSION UPTO 200 HPA LEVEL. THE POSITIVE LOW LEVEL CONVERGENCE IS ABOUT $30 \times 10^{-5} \text{S}^{-1}$ TO THE SOUTHEAST OF SYSTEM AREA. POSITIVE UPPER LEVEL DIVERGENCE IS ABOUT $50 \times 10^{-5} \text{S}^{-1}$ TO THE SOUTHWEST OF THE SYSTEM AREA. STRONG OUTFLOW IS SEEN IN UPPER LEVELS. WIND SHEAR IS MODERATE (10—15 KNOTS) OVER SYSTEM AREA AND ALONG THE EXPECTED TRACK AND IT IS MODERATE TO HIGH OVER WESTERN PARTS OF WESTCENTRAL ARABIAN SEA. UPPER TROPOSPHERIC RIDGE RUNS NEAR 14°N IN ASSOCIATION WITH ANTICYCLONIC CIRCULATION OVER SOUTHEAST & ADJOINING EASTCENTRAL ARABIAN SEA. AS SUCH, TC TEJ LIES ON THE PERIPHERY OF THIS ANTICYCLONE AND HENCE, ACCORDINGLY SHOWS WEST-NORTHWESTWARDS MOVEMENT. AS IT MOVES AWAY FROM THIS ANTICYCLONE, ALONG THE PERIPHERY, IT'S DIRECTION OF MOVEMENT WOULD GRADUALLY CHANGE FROM WEST-NORTHWESTWARDS TO NORTHWESTWARDS TO NORTH-NORTHWESTWARDS LEADING TO LANDFALL OVER YEMEN AND ADJOINING OMAN.

FURTHER DURING NEXT 24 HOURS, HIGHER SST, HIGHER OCEAN THERMAL ENERGY, LOW-MODERATE VERTICAL WIND SHEAR, STRONG OUTFLOW IN UPPER LEVELS WOULD MAKE CONDITIONS FAVOURABLE FOR RAPID INTENSIFICATION. TEMPORARILY, IT MAY ALSO INTENSIFY INTO AN EXTREMELY SEVERE CYCLONIC STORM OVER WESTCENTRAL ARABIAN SEA WITH WIND SPEED REACHING UPTO 90-95 KNOTS AROUND 0600 UTC OF 22ND OCTOBER. AS IT MOVES CLOSER TO COAST, IT WILL ENCOUNTER DRY AIR INCURSION AND COLDER SST AND HENCE MAY EXHIBIT WEAKENING PRIOR TO LANDFALL.

THE MULTI MODEL GUIDANCE IS INDICATING THE SYSTEM TO MOVE NORTHWESTWARDS TILL 0000 UTC OF 24TH & THEN NORTH-NORTHWESTWARDS. MOST OF THE MODELS ARE INDICATING THE SYSTEM TO CROSS OMAN – YEMEN COASTS (ECMWF, UKMO, IMD HWRF TOWARDS YEMEN AND IMD MME, NCEP, CMC, NCUM, IMD GFS, SLIGHTLY TOWARDS OMAN) AROUND 1200 UTC OF 24TH OCTOBER. BUT THERE IS CONSENSUS THAT CROSSING WOULD BE OVER YEMEN & ADJOINING OMAN COASTS. MODELS ARE ALSO SUGGESTING SLIGHT WEAKENING PRIOR TO LANDFALL. THIS IS SUPPORTED BY DECREASING OCEAN THERMAL ENERGY AND INCREASING WIND SHEAR OVER WESTCENTRAL ARABIAN SEA ALONG & OFF OMAN-YEMEN COASTS.

IN VIEW OF ABOVE, THE VERY SEVERE CYCLONIC STORM “TEJ” (PRONOUNCED AS TEJ) IT IS VERY LIKELY TO INTENSIFY FURTHER INTO AN EXTREMELY SEVERE CYCLONIC STORM IN THE 0600 UTC OF 22ND OCTOBER. IT IS VERY LIKELY TO MOVE NORTHWESTWARDS TILL 0000UTC OF 24TH & THEN NORTH-NORTHWESTWARDS. IT IS LIKELY TO CROSS YEMEN-OMAN COASTS BETWEEN AL GHAIHAH (YEMEN, 41398) & SALALAH (OMAN, 41316) BY 1200 UTC OF 24TH OCTOBER 2023.

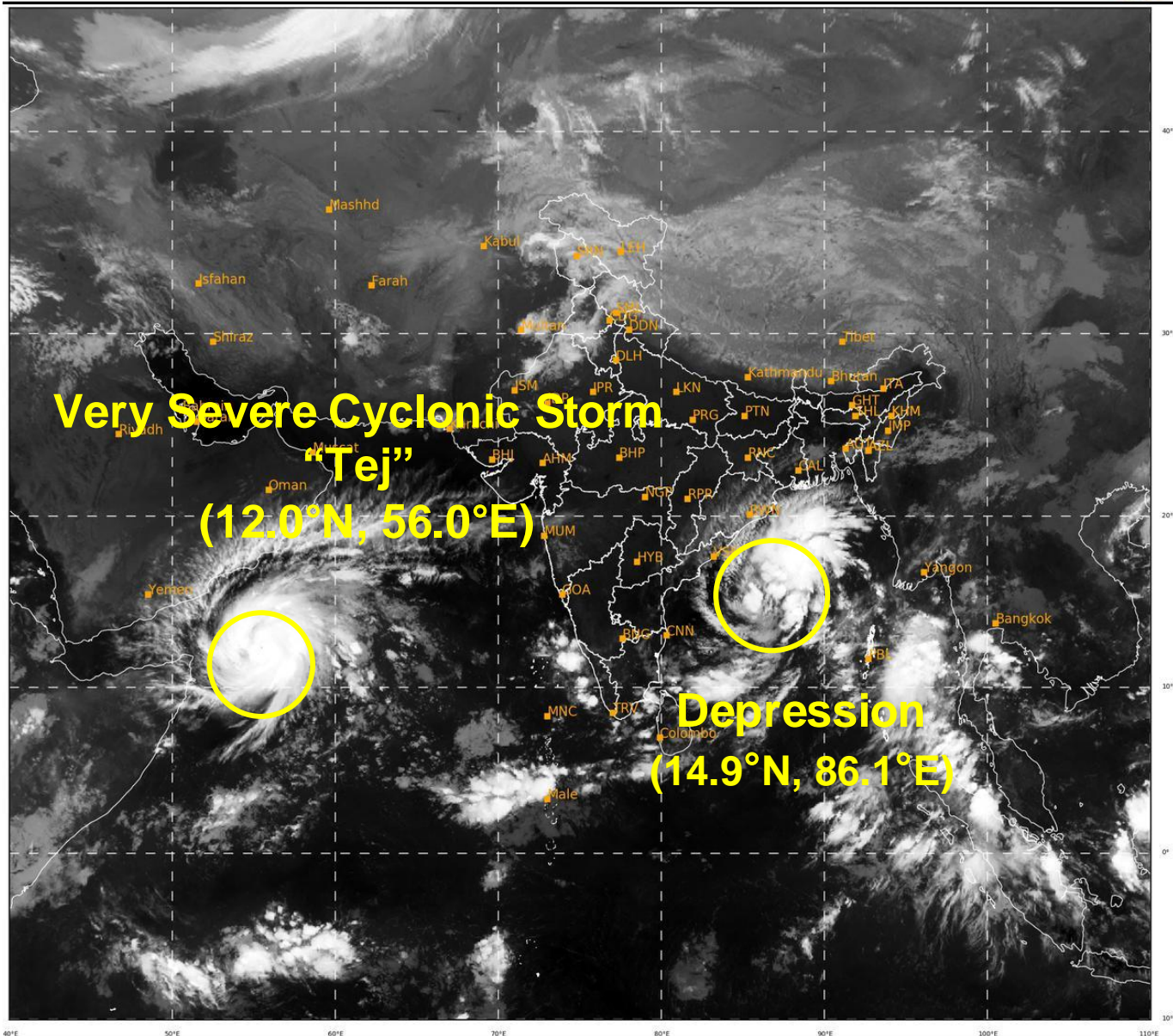
BAY OF BENGAL:

MJO IS NOT SUPPORTIVE FOR CYCLOGENESIS OVER BOB. HOWEVER, WARM SST AND LOW TO MODERATE VERTICAL WIND SHEAR OVER SOUTH & CENTRAL BOB ARE LIKELY TO SUPPORT THE DEVELOPMENT OF DEEP DEPRESSION OVER BOB. THE GLOBAL MODELS ARE IN AGREEMENT THAT THE LOW PRESSURE AREA OVER SOUTHEAST BAY OF BENGAL IS LIKELY TO INTENSIFY FURTHER INTO A DEEP DEPRESSION DURING NEXT 24 HOURS. AND FURTHER INTENSIFY INTO A CYCLONIC STORM AROUND 1800 UTC OF 23RD OCTOBER 2023.

THERE IS CONSENSUS AMONG VARIOUS MODELS WRT MOVEMENT TOWARDS BANGLADESH. MOST OF THE MODELS ARE INDICATING INTENSIFICATION UPTO DEEP DEPRESSION STAGE, HOWEVER CMC AND IMDGEFS IS INDICATING HIGHER INTENSITY.

CONSIDERING ALL THESE, THE DEPRESSION OVER WESTCENTRAL BAY OF BENGAL IS LIKELY TO FURTHER INTENSIFY INTO A DEEP DEPRESSION DURING NEXT 24 HOURS. IT IS LIKELY TO MOVE NORTHWESTWARDS DURING NEXT 12 HOURS, THEN RECURVE AND MOVE NORTH-NORTHEASTWARDS DURING SUBSEQUENT 3 DAYS TOWARDS BANGLADESH AND ADJOINING WEST BENGAL COASTS.

(ARULALAN T)
SCIENTIST-C
RSMC, NEW DELHI



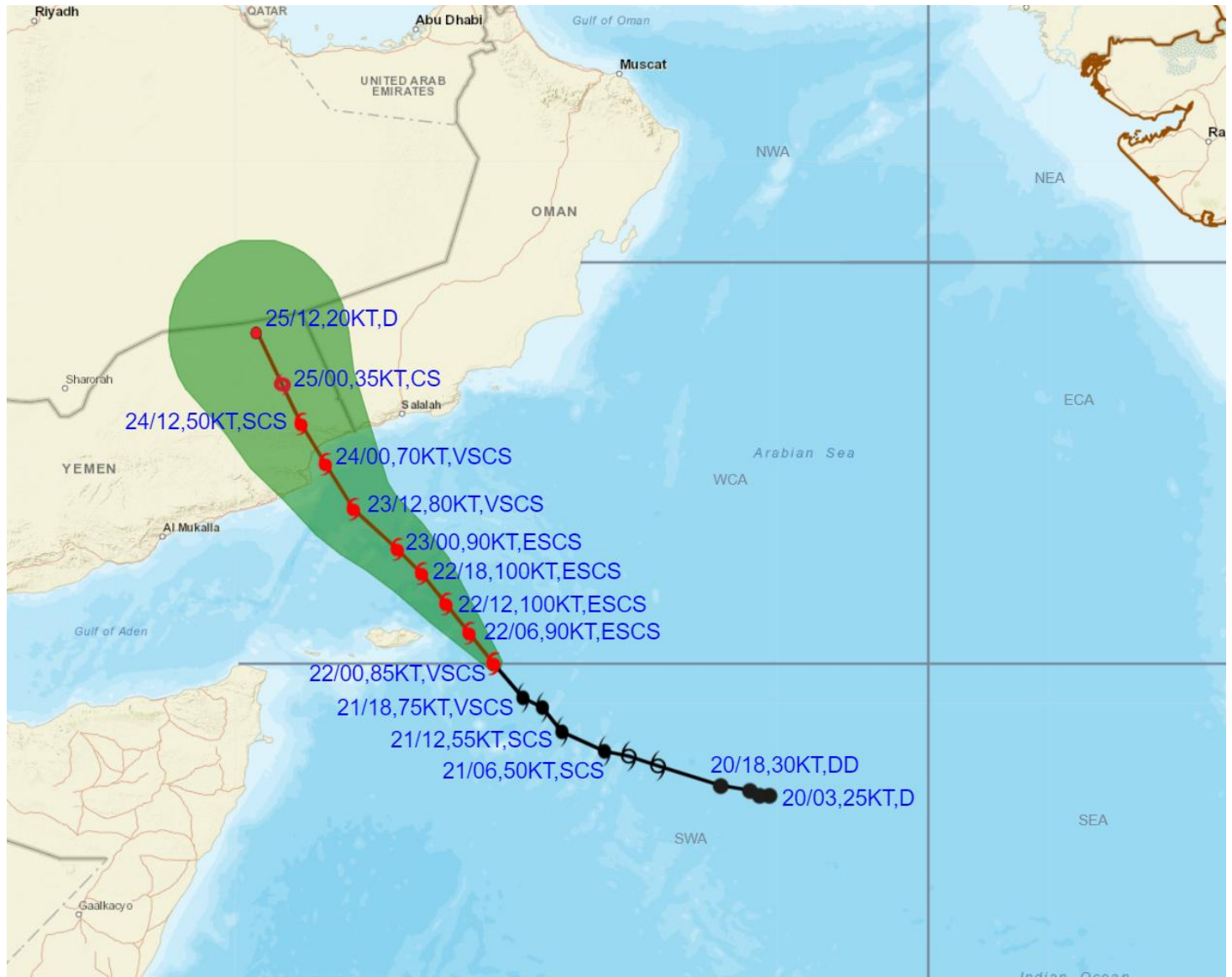
526

931

IMD,DELHI



OBSERVED AND FORECAST TRACK ALONGWITH CONE OF UNCERTAINTY OF VERY SEVERE CYCLONIC STORM "TEJ" OVER WESTCENTRAL & ADJOINING SOUTHWEST ARABIAN SEA BASED ON 0000 UTC (0530 IST) OF 22ND OCTOBER 2023.



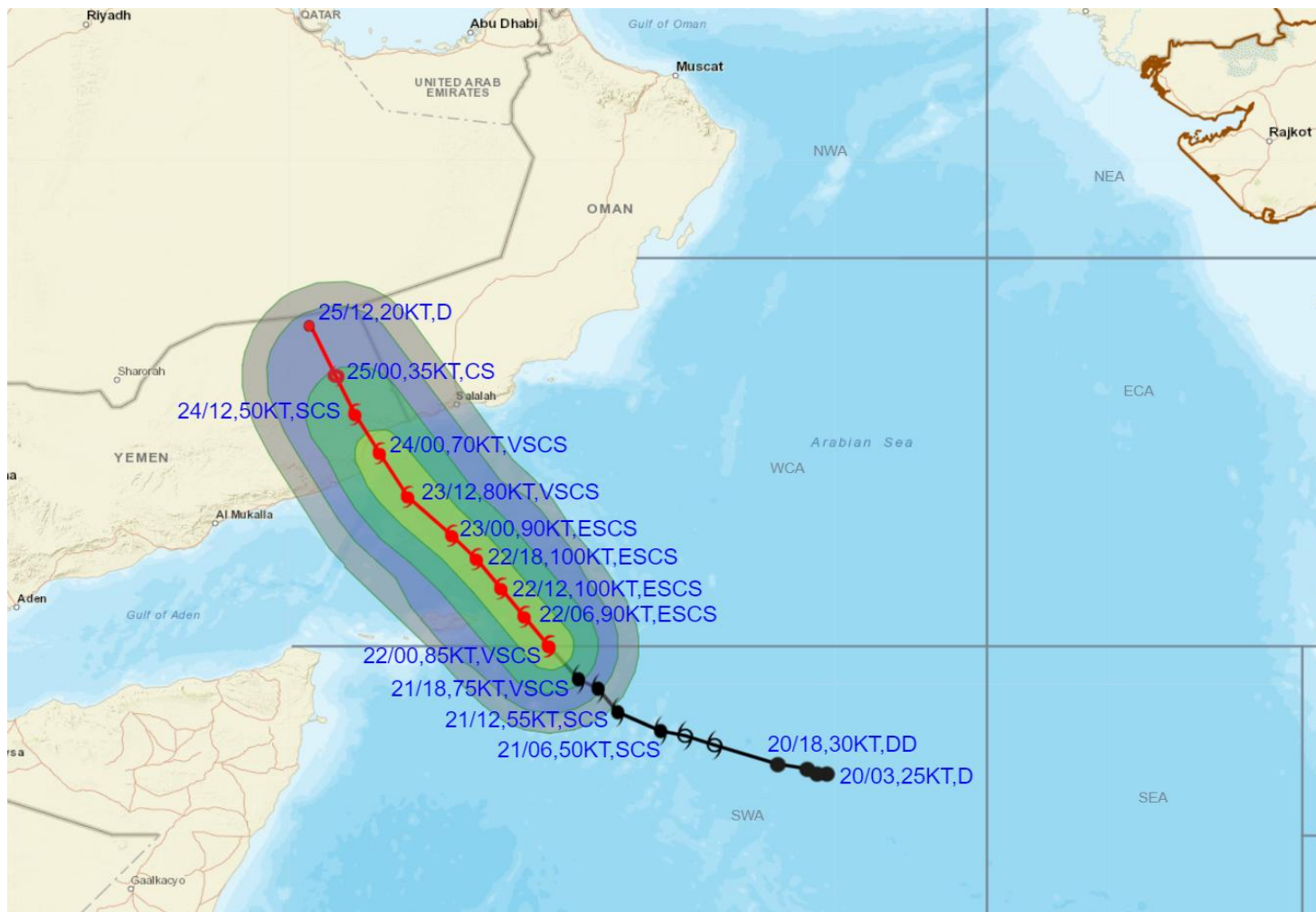
DATE/TIME IN UTC
 IST=UTC + 0530
 L: LOW PRESSURE AREA
 WML: WELL MARKED LOW PRESSURE AREA
 D: DEPRESSION (17-27 KT)
 DD: DEEP DEPRESSION (28-33 KT)
 CS: CYCLONIC STORM (34-47 KT)
 SCS: SEVERE CYCLONIC STORM (48-63KT)
 VSCS: VERY SEVERE CYCLONIC STORM (64-89 KT)
 ESCS: EXTREMELY SEVERE CYCLONIC STORM (90-119 KT)
 SuCS: SUPER CYCLONIC STORM (\geq 120 KT)

- LESS THAN 34 KT
- 34-47 KT
- \geq 48 KT
- OBSERVED TRACK
- FORECAST TRACK
- CONE OF UNCERTAINTY

Cloud distribution: (a) Isolated: <25%, Scattered:25-50%, Broken: 51-75%, Solid>75%, Convection Intensity: (a) Weak: Cloud Top Temperature (CTT) >-25°C, (b) Moderate: CTT: - 25°C to -40°C, (c) Intense: CTT: - 41°C to -70°C and (d) Very Intense: : Less than -70°C
 PROBABILITY OF CYCLOGENESIS (FORMATION OF DEPRESSION):NIL: 0%, LOW: 1-33% , MODERATE: 34-66% AND HIGH: 67-100%
 This is a guidance Bulletin for WMO/ESCAP Panel Member countries. Visit respective National websites for Country specific Bul letins



OBSERVED AND FORECAST TRACK ALONGWITH QUADRANT WIND DISTRIBUTION OF VERY SEVERE CYCLONIC STORM "TEJ" OVER WESTCENTRAL & ADJOINING SOUTHWEST ARABIAN SEA BASED ON 0000 UTC (0530 IST) OF 22ND OCTOBER 2023.



DATE/TIME IN UTC
IST=UTC + 0530

L: LOW PRESSURE AREA

WML: WELL MARKED LOW PRESSURE AREA

D: DEPRESSION (17-27 KT)

DD: DEEP DEPRESSION (28-33 KT)

CS: CYCLONIC STORM (34-47 KT)

SCS: SEVERE CYCLONIC STORM (48-63KT)

VSCS: VERY SEVERE CYCLONIC STORM (64-89 KT)

ESCS: EXTREMELY SEVERE CYCLONIC STORM (90-119 KT)

SuCS: SUPER CYCLONIC STORM (\geq 120 KT)

- LESS THAN 34 KT
- ⊖ 34-47 KT
- ⊖ ⊖ \geq 48 KT
- OBSERVED TRACK
- FORECAST TRACK
- CONE OF UNCERTAINTY
- AREA OF MAXIMUM SUSTAINED WIND SPEED:
- 28-33 KT (52-61 KMPH)
- 34-49 KT (62-91 KMPH)
- 50-63 KT (92-117 KMPH)
- \geq 64 KT (\geq 118 KMPH)

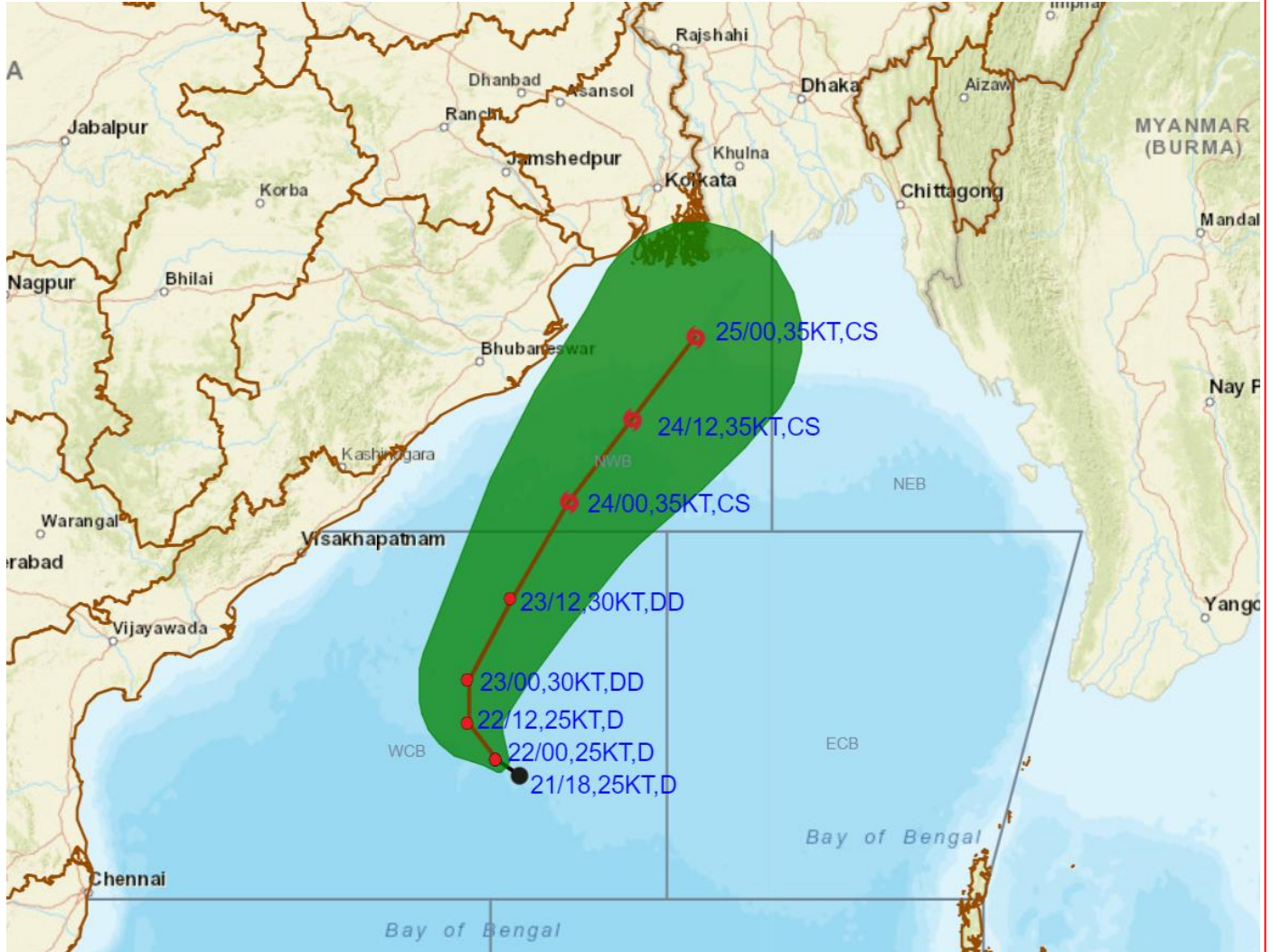
IMPACT OVER THE SEA

MSW (knot/kmph)	Impact	Action
28-33 (52-61)	Very rough seas	Total suspension of fishing operations
34-49 (62-91)	High to very high seas	Total suspension of fishing operations
50-63 (92-117)	Very high seas	Total suspension of fishing operations
\geq 64 (\geq 118)	Phenomenal	Total suspension of fishing operations

Cloud distribution: (a) Isolated: <25%, Scattered:25-50%, Broken: 51-75%, Solid>75%, Convection Intensity: (a) Weak: Cloud Top Temperature (CTT) >-25°C, (b) Moderate: CTT: - 25°C to -40°C, (c) Intense: CTT: - 41°C to -70°C and (d) Very Intense: : Less than -70°C
PROBABILITY OF CYCLOGENESIS (FORMATION OF DEPRESSION):NIL: 0%, LOW: 1-33% , MODERATE: 34-66% AND HIGH: 67-100%
This is a guidance Bulletin for WMO/ESCAP Panel Member countries. Visit respective National websites for Country specific Bul letins



OBSERVED AND FORECAST TRACK ALONGWITH CONE OF UNCERTAINTY OF DEPRESSION OVER WESTCENTRAL BAY OF BENGAL BASED ON 0000 UTC (0530 IST) OF 22ND OCTOBER 2023.

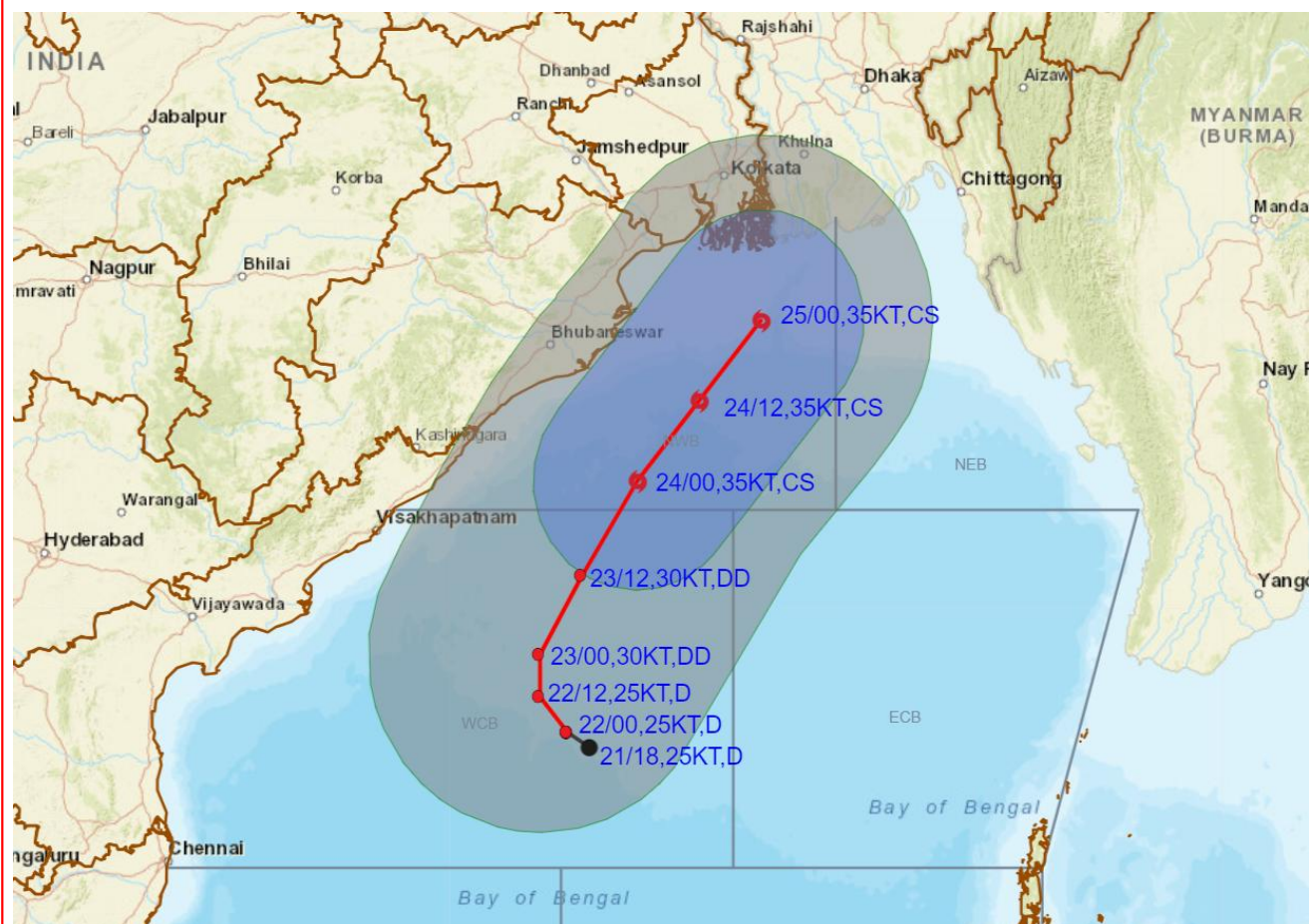


DATE/TIME IN UTC
 IST=UTC + 0530
 L: LOW PRESSURE AREA
 WML: WELL MARKED LOW PRESSURE AREA
 D: DEPRESSION (17-27 KT)
 DD: DEEP DEPRESSION (28-33 KT)
 CS: CYCLONIC STORM (34-47 KT)
 SCS: SEVERE CYCLONIC STORM (48-63KT)
 VSCS: VERY SEVERE CYCLONIC STORM (64-89 KT)
 ESCS: EXTREMELY SEVERE CYCLONIC STORM (90-119 KT)
 SuCS: SUPER CYCLONIC STORM (\geq 120 KT)

- LESS THAN 34 KT
- 34-47 KT
- \geq 48 KT
- OBSERVED TRACK
- FORECAST TRACK
- CONE OF UNCERTAINTY



OBSERVED AND FORECAST TRACK ALONGWITH QUADRANT WIND DISTRIBUTION OF DEPRESSION OVER WESTCENTRAL BAY OF BENGAL BASED ON 0000 UTC (0530 IST) OF 22ND OCTOBER 2023.



DATE/TIME IN UTC
 IST=UTC + 0530
L: LOW PRESSURE AREA
WML: WELL MARKED LOW PRESSURE AREA
D: DEPRESSION (17-27 KT)
DD: DEEP DEPRESSION (28-33 KT)
CS: CYCLONIC STORM (34-47 KT)
SCS: SEVERE CYCLONIC STORM (48-63KT)
VSCS: VERY SEVERE CYCLONIC STORM (64-89 KT)
ESCS: EXTREMELY SEVERE CYCLONIC STORM (90-119 KT)
SuCS: SUPER CYCLONIC STORM (≥ 120 KT)

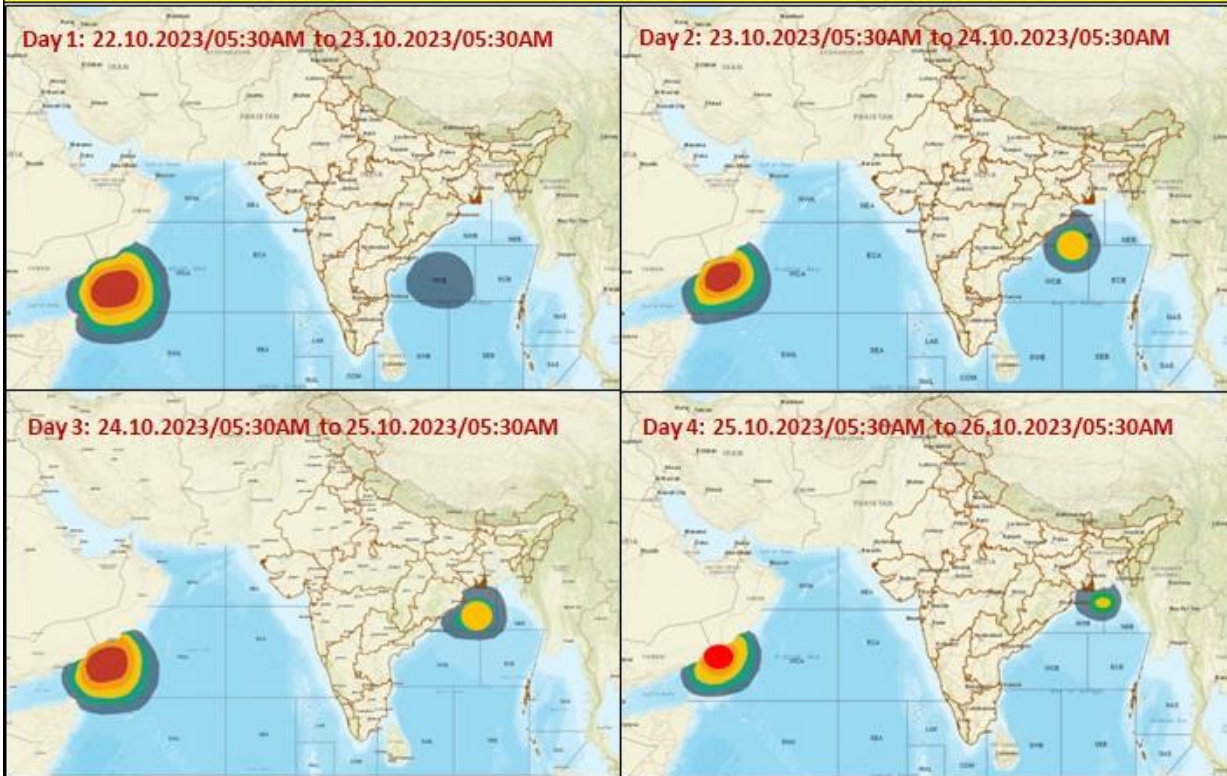
- LESS THAN 34 KT
- 34-47 KT
- ≥ 48 KT
- OBSERVED TRACK
- FORECAST TRACK
- ▲ CONE OF UNCERTAINTY
- AREA OF MAXIMUM SUSTAINED WIND SPEED:
- 28-33 KT (52-61 KMPH)
- 34-49 KT (62-91 KMPH)
- 50-63 KT (92-117 KMPH)
- ≥ 64 KT (≥118 KMPH)

IMPACT OVER THE SEA

MSW (knot/kmph)	Impact	Action
28-33 (52-61)	Very rough seas	Total suspension of fishing operations
34-49 (62-91)	High to very high seas	Total suspension of fishing operations
50-63 (92-117)	Very high seas	Total suspension of fishing operations
≥ 64 (≥118)	Phenomenal	Total suspension of fishing operations

Cloud distribution: (a) Isolated: <25%, Scattered:25-50%, Broken: 51-75%, Solid>75%, Convection Intensity: (a) Weak: Cloud Top Temperature (CTT) >-25°C, (b) Moderate: CTT: - 25°C to -40°C, (c) Intense: CTT: - 41°C to -70°C and (d) Very Intense: : Less than -70°C
PROBABILITY OF CYCLOGENESIS (FORMATION OF DEPRESSION): NIL: 0%, LOW: 1-33% , MODERATE: 34-66% AND HIGH: 67-100%
 This is a guidance Bulletin for WMO/ESCAP Panel Member countries. Visit respective National websites for Country specific Bul letins

Fishermen warning graphics



	Squally WX with wind speed 40-45 kmph gusting to 55 kmph
	Squally WX with wind speed 45-55 kmph gusting to 65 kmph
	Squally wind with speed 50-60 kmph gusting to 70 kmph
	CS with Gale wind speed 60-90 kmph gusting to 110 kmph
	SCS with Gale wind speed 90-110 kmph gusting to 120 kmph
	VSCS with Gale wind speed 110-160 kmph gusting to 175 kmph
	ESCS with Gale wind speed 160-220 kmph gusting to 240 kmph

Fishermen are advised not to venture into the marked areas.